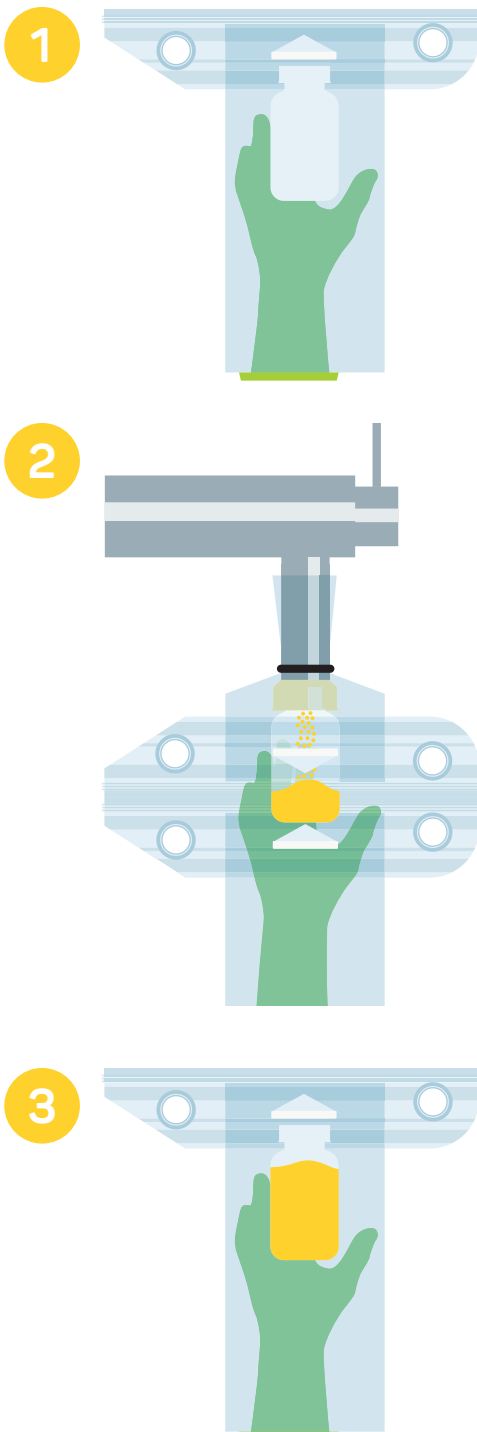


# FLECOTEC

## INLINE SAMPLING



### HOW IT WORKS

To take a sample directly from a processing unit, a Flecozip adapter is attached to the outlet flange. This adapter remains attached at the sampling point for the entire campaign.

- 1 A Flecozip bag with a glove port and containing the sample bottle is attached to the Flecozip adapter by means of a slider and the closures are opened.
- 2 The sample bottle is then opened using the glove port, passed through the opened Flecozip closures, and attached to the sampling point.
- 3 Once a sample has been taken, the sample bottle is unscrewed from the sampling point, placed back in the Flecozip bag, and sealed.

The Flecozip bag then simply needs to be detached from the adapter and the bag and its contents can be sent to the laboratory for analysis.

PE bottles, which are available in standard sizes and also sample bottles, provided by the customers themselves, can be used.

This system can be used not only for powdered substances, but also for fluid components.



**Rommelag Flex Pharma GmbH**

Breisgauring 13  
79427 Eschbach  
Germany

T + 49 7632 828 553-0  
F + 49 7632 828 553-9

[mail.rfp@rommelag.com](mailto:mail.rfp@rommelag.com)  
[www.rommelag.com](http://www.rommelag.com)

