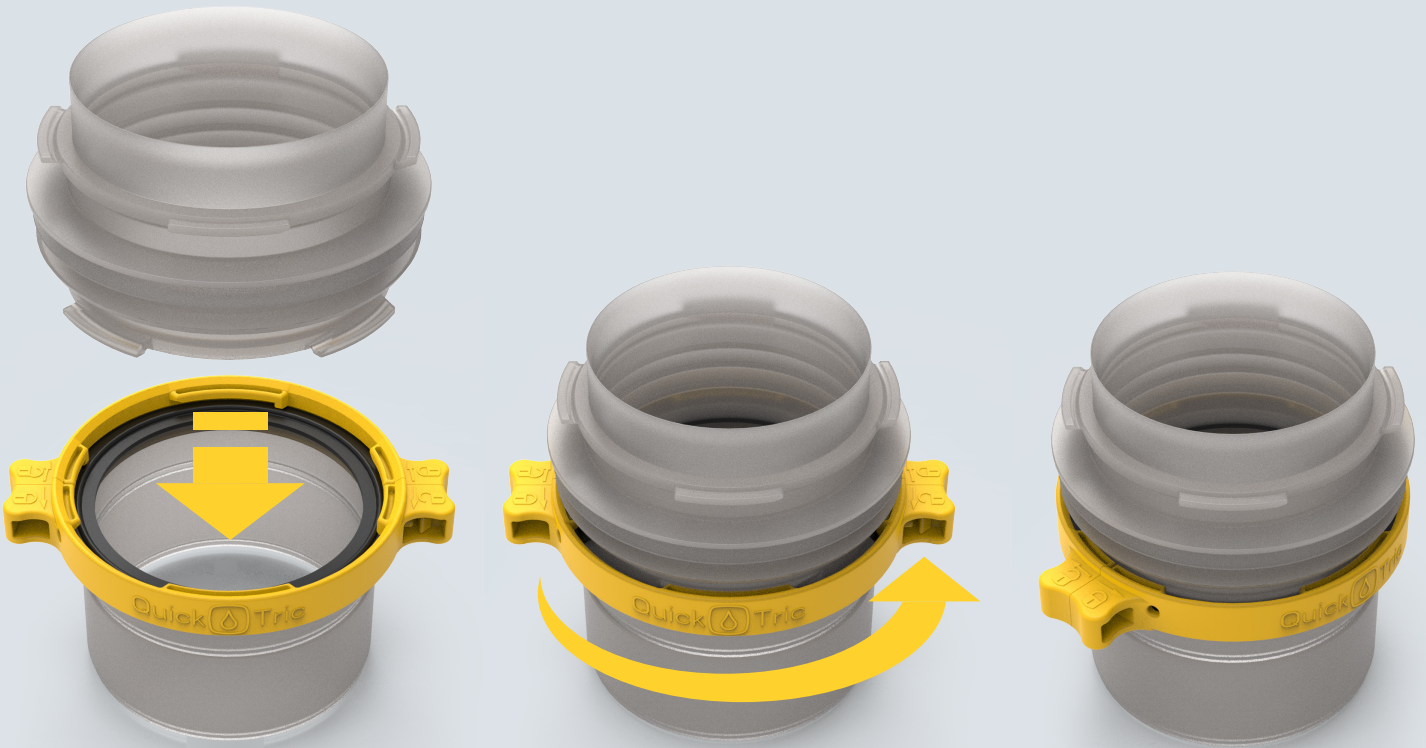


FILLING YOUR NEEDS



FLECOTEC QUICKTRIC

THE SMART CONTAINMENT INTERFACE WITH MODULAR EXPANSION



MOUNT

TWIST

CONNECTED

FLECOTEC®

WORLD FIRST

The benefits at a glance:

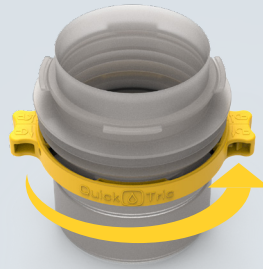
- ▷ Extremely easy-to-use tri-clamp interface
- ▷ Clear cross-section for smooth flow of material
- ▷ No gasket wear
- ▷ Modular expansion for a containment interface to meet zone requirements
- ▷ Can be retrofitted at all tri-clamp interfaces
- ▷ Available in PE plastic-only version or hybrid version
- ▷ Suitable for gamma ray sterilisation
- ▷ Available as a complete system or as individual components

MOUNT - TWIST - CONNECTED

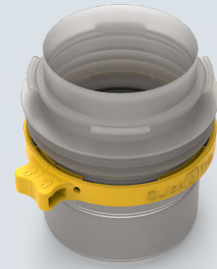
The new Flecotec QuickTric connection is based on optimised tri-clamp technology, which is easy to use thanks to the integrated bayonet coupling.



MOUNT



TWIST

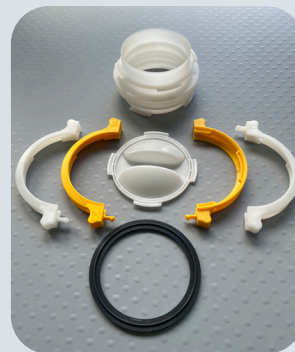


CONNECTED

It completely eliminates the awkward connection and disconnection process with a standard tri-clamp, and the associated risk of the gasket slipping or even falling into the process area (Fig. 2).

This is particularly beneficial if multiple powder bags need to be added to the process in direct succession.

On the bag side, the QuickTric has a heat-sealed film flange (Fig. 3) and an additional tri-clamp contour. This means that the QuickTric can be attached to any container with a standard tri-clamp flange.



1. QuickTric components individually and assembled



2. Standard tri-clamp interface



3. QuickTric complete installation



4. QuickTric complete installation with Flecozip secondary housing

Upgrade with Flecozip to sealed containment interface

Additional enclosure of the QuickTric primary interface with a Flecozip adapter means that the highest requirements can be met for the containment level.

The new QuickTric offers the option of attaching a Flecozip secondary interface via a clip mechanism for this purpose. This modular upgrade therefore creates a reversible, sealed connection option that complies with zone requirements (Fig. 4).